



**HARDWARE SUPPLIERS OF AMERICA**  
**Product Catalog**

**SCHLAGE®**  
Electronics

**Phone: 800-334-5625      Fax: 800-334-5635**

[www.hardware-suppliers.com](http://www.hardware-suppliers.com)

Programmable Locking Systems .....	Page 4
AD Series Programmable Locks .....	Page 6
Access Credentials .....	Page 7
Electromagnetic Locks .....	Page 8
Electronic Access and Releasing Devices .....	Page 9
Electronic Accessories .....	Page 10
Security Management Software .....	Page 11

## Finishes

Finish Description	Finish Number
Bright Brass	605
Bright Chrome	625
Oil Rubbed Bronze	613
Satin Aluminum, Clear Anodized	628
Satin Chrome	626
Dark Bronze	695

## Lever Styles



Rhodes - #06 Lever



Sparta - #17 Lever

## Order Instructions

Sample Order: **MPC06RH613**

**MCP      06      RH      613**

1                      2                      3                      4

1. Select **Model**
2. Select **Lever Style**
3. Select **Handing** (if applicable)
4. Select **Finish**
5. Select **Lock Options** (if applicable)
6. Select **Accessories** (if applicable)

## King Cobra 2 / King Cobra 5000 Cylindrical Series

- 120 Different codes/credentials
- iButton credentials
- Full mortise cylinder
- Battery powered
- Weather resistant
- ANSI Grade 1
- Vandlguard® clutching lever



**KC2 5000 Series**

Model #	Function	Lever Style	Finish		
<b>KC5196-2</b>	Classroom/Storeroom	06	626		
<b>KC5196</b>	Classroom/Storeroom	06	605 ø	613 ø	626 ø
Lever Style					
06	Rhodes				
Cylinder Lock Option					
KD	1¼" Schlage Everest Cylinder (C123) Keyway				
Lock Option					
SLB	2¾" Backset, ½" Latchbolt				

ø DWO - Discontinued when out of stock

## King Cobra 2 / King Cobra 5000 Mortise Series

- 120 Different codes/credentials
- iButton credentials
- Full mortise cylinder
- Battery powered
- Weather resistant
- ANSI Grade 1
- Vandlguard® clutching lever

Model #	Function	Lever Style	Finish	
<b>KC5594-2</b>	Classroom/Storeoom	06	626	
<b>KC5596</b>	Classroom/Storeroom	06	613 ø	626 ø
Lever Style				
06	Rhodes			
Cylinder Lock Option				
KD	1¼" Schlage Everest Cylinder (C123) Keyway			
Lock Option				
SLB	2¾" Backset, ½" Latchbolt			

ø DWO - Discontinued when out of stock

## King Cobra 2 / King Cobra 9000 Series for Narrow Stile Aluminum Doors

- 120 Different codes/credentials
- iButton credentials
- Full mortise cylinder
- Battery powered
- Weather resistant
- ANSI Grade 1
- Vandlguard® clutching lever



**KC2 9000 Series**

Model #	Description	Lever Style	Finish	
<b>KC9111</b>	Trim with lever for use with deadlatches	06	626 ø	695 ø
<b>Lever Style</b>				
06	Rhodes			
<b>Key Cylinder Lock Option</b>				
KD	1¼" Schlage Everest Cylinder			
<b>Trim Accessory</b>				
KC9000KRP ø	Cover Plate designed to conceal existing preps, Aluminum			

ø DWO - Discontinued when out of stock

## Communication Options

### Networked

In facilities where increased monitoring and control are needed, a networked solution is essential. The AD-Series networked options feature:

- Open Architecture Platform
- Centralized Lockdown
- Real-time Monitoring

The AD-Series networked lock is available in either a wireless or hardwired configuration to fit your application needs

- AD-300: Networked Hardwired Locks
- AD-400: Networked Wireless Locks



### Offline

Offline locks are a cost-effective solution for doors that do not require real-time monitoring. The AD-Series offline solution provides:

- Upgradability
- Improved Credential Management
- Audit Trail Reports

Schlage offers two AD-Series offline solutions to fit your environment:

- AD-200: Access rights are stored on the lock
- AD-250: Access rights are stored on the magnetic stripe credential



- Proximity
- Smart Card
- Multi-Technology

+ KEYPAD



- Magnetic Stripe (Insertion)

+ KEYPAD



- Magnetic Stripe (Swipe)

+ KEYPAD



- Keypad

## Chassis

- Cylindrical
- Mortise
- Mortise Deadbolt
- Exit Trim

## Locking functions

- Classroom/Storeroom
- Office
- Privacy
- Apartment

## Lever styles



Sparta



Rhodes



Athens



Tubular

## Access Credentials



iButton

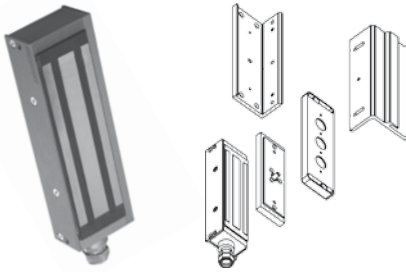


Proximity Card

Model #	Description
IBF	iButton on Fob - Black
IBF - 10	10 pack - iButton on keyfob - Black
IBF - 25	25 pack - iButton on keyfob - Black
PRX1	Proximity Card - Standard .070" thick

## 390G+ Gate Lock

- Includes - universal mounting brackets - for swinging or sliding gate
- Special corrosion resistant finish
- 1/2" EMT compression fitting
- Built in voltage spike suppression



**390G**  
Single Lock

Model #	Description	Finish
<b>390G+</b>	Single Lock • Gate Lock	628

Specifications	
<b>Holding Force (lbs)</b>	1500
<b>Input Voltage (Std. Unit)</b>	12/24 VDC
<b>Current Draw (Amps-Std Unit)</b> Automatic Dual Voltage 12/24 VDC	.67A @ 12VDC .35A @ 24VDC
<b>Height</b>	2 1/2"
<b>Length</b>	9"
<b>Width</b>	1 1/2"
<b>Weight (Approx. in lbs.)</b>	14 lbs



## GF3000 Surface Mount Series Shear Lock

- Microprocessor Controlled
- Built-in Auto Relocking Switch (ARS)
- Jump 1/4" Gap - No In-rush Current (noticeable noise level when connecting)
- Automatic Voltage Selection 12VDC or 24VDC
- Cool Temperature Regulator
- Adjustable Time Delay, 0-30 Sec. from face of magnet
- Satin Black, Anodized Housing



**GF3000SM**

Model #	Description	Finish
<b>GF3000SM</b>	Standard Unit (outswinging doors) • Adjustable from top edge of armature	628

Specifications	
<b>Holding Force (lbs)</b>	3000
<b>Current Draw</b>	.90A @ 12VDC .45A @ 24VDC
<b>Lock Housing</b>	9-13/16" L x 1 1/4" H x 1 1/2"
<b>Current Draw</b>	.90A @ 12VDC .45A @ 24VDC
<b>Armature Housing</b>	8 3/8" L x 1 3/8" W x 1/2" D
<b>Weight (Approx. in lbs.)</b>	9 lbs

## 672 TouchBar

- Push pad with "PUSH TO EXIT" signage
- 1/4" Movement to activate switch
- Heavy-duty aluminum extrusion and zinc end caps
- Universal mounting system for aluminum, hollow metal and wood doors
- Field reversible



672 TouchBar

Model #	Description	Finish
672	Request-to-exit device used to release electromagnetic locks Black pushpad with RED letters "PUSH TO EXIT"	628

### Specifications

<b>Mechanical</b>	Available in standard lengths to fit 36", 42" & 48" doors Can be field cut at installation site
<b>Electrical</b>	
Input Voltage	12 or 24 VDC. Maximum draw current .250 Amps
Switch	SPDT contacts rated 3A @ 30 VDC
Wiring	3 Conductor Cable - 20 AWG - 6ft long

ø DWO - Discontinued when out of stock

## Pushbuttons

- 5A @ 30 VAC/VDC, momentary SPDT contacts (701RD EX only)



623

Model #	Cover Plate	Cone	Button
<b>600 Series Heavy Duty Pushbuttons</b>			
623RD EX ø	Stainless Steel 2 3/4" x 4 1/2"	Plastic Translucent	1 5/8" Red "Push to Exit"
<b>700 Series Entry Level Pushbuttons</b>			
701RD EX ø	Stainless Steel 2 3/4" x 4 1/2"	—	5/8" Red Engraved "Push to Exit"

ø DWO - Discontinued when out of stock



701 Series

## 650 Series Heavy Duty Keyswitch

- Patented Magnetic Spring Design
- Momentary to Maintained Functions
- 5A @ 30 VAC/VDC, SPDT contacts



653

Single Lock

Model #	Description	Cover Plate
653-05 ø	SPDT momentary single direction - Stainless Steel	2 3/4" x 4 1/2"

ø DWO - Discontinued when out of stock

NOTE: 650 Series Keyswitches operate with either a 1 1/8" or 1-1/4" cylinder having a straight type cam. 1 1/4" cylinders require a 1/8" blocking / spacer ring (Included with the CYL and CYL-KA options).

## Electronic Horn

- Immediate, local audible warning device
- Designed for indoor application
- Surface and flush mounting kits included with all horns
- Latching units require a reset action
- Horn color is white
- Anechoic Room @ 30V-120dba/UL.  
Reverberant Room @ 30V- 88dba

Model #	Description
L1910-1	12/24 VDC Horn with latching, current draw 28mA



Horn

## 590 Series Transformers



593 PI-12

Model #	Description
593 PI-12	12 Volt VAC-AC output - 1A max. (plug-in)

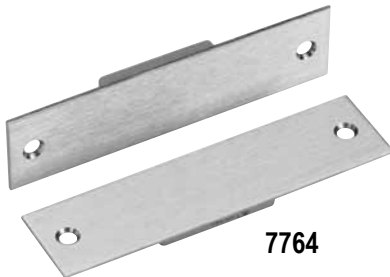
## Door Position Switches



679-05WD

Model #	Description
679 Series Concealed SPDT Magnetic Switch (0.3 A @ 30VDC)	
679-05HM	HM Hollow Metal Door and Frame
7700/7800 Series Door Position Switch (0.5 A @ 28VDC)	
7764	Concealed / Flush Mount - UL Listed

Door Cords	
788-12	12" x 3/8" Armored Door Cord - less wires



7764

## Express Level Software Package

Model #	Description
SXPR-CIP	Offline Lock Software plus programming cable and computer interface. Designed for office locks of fewer than 1000 users and/or 100 access points. Reporting capability will retrieve audit trails, access privileges granted and time functions. Must be installed on a computer that meets the minimum requirements.

